



GWM

GO WITH MORE

Chuck more in



Overseas model shown

GWM Cannon

GWM Cannon. Chuck more in.

Contents	Page	1
Introduction	Page	2
Design	Page	6
Performance	Page	10
Technology	Page	16
Safety	Page	18
Accessories	Page	22
GWM Care	Page	26
Colour	Page	28
Dimensions	Page	30
Specifications	Page	32



Say hello to GWM.

GWM is a world-renowned vehicle manufacturer capable of designing and producing SUVs, utes and powertrains simultaneously. At GWM, everything we do is grounded in our corporate philosophy: ‘improving little by little every day.’ From building world-class research and development systems, which enable continuous innovation, to following the ‘excessive investment’ principle, which drives industry leadership, we relentlessly put our philosophy into practice. We are proud to make vehicles that combine the best components, technology and safety features from around the world. With over 2.5 million ute and pick up’s sold globally (and counting), we are a proud maker of durable utilitarian vehicles for over 25 years. We attribute our success to passion, drive and a commitment to listening to our customers.



Tough never looked so good.

With more style inside, and more power out,
we've chunked more in the new Cannon.



Don't be fooled by its rugged exterior, the GWM Cannon is a smooth and sophisticated driving experience. Locally-tuned, independent front suspension, paired with heavy duty rear leaf suspension creates outstanding load-carrying in any terrain.

Discover the thrill of driving in the refined, European designed cabin, with plenty of legroom and all the features you need. Enjoy the comfort of adjustable seats, the practicality of a reversing camera and the clarity of a large 12.3 inch colour instrument cluster.



Rugged on the outside. Luxurious inside.

Overseas model shown



LED tail lights



3.5 tonne towing



60/40 split folding seats

Overseas model shown

We've chunked in more power.



Powered by a new 2.4 litre turbo diesel engine delivering 135kW and 480Nm, the GWM Cannon is a capable partner for just about anything.

When paired with the GWM self-developed 9-speed automatic transmission, the driving experience is nothing short of impressive whether carrying a light load or towing the boat or caravan.

The advanced 4x4 system engineered by respected global supplier Borg Warner provides the driver with superior technology including a rear differential lock and 4WD low range to tackle tough off-road environments with ease.

Overseas model shown

**Powered by a
new 2.4 litre turbo
diesel engine
delivering 135kW
and 480Nm.**



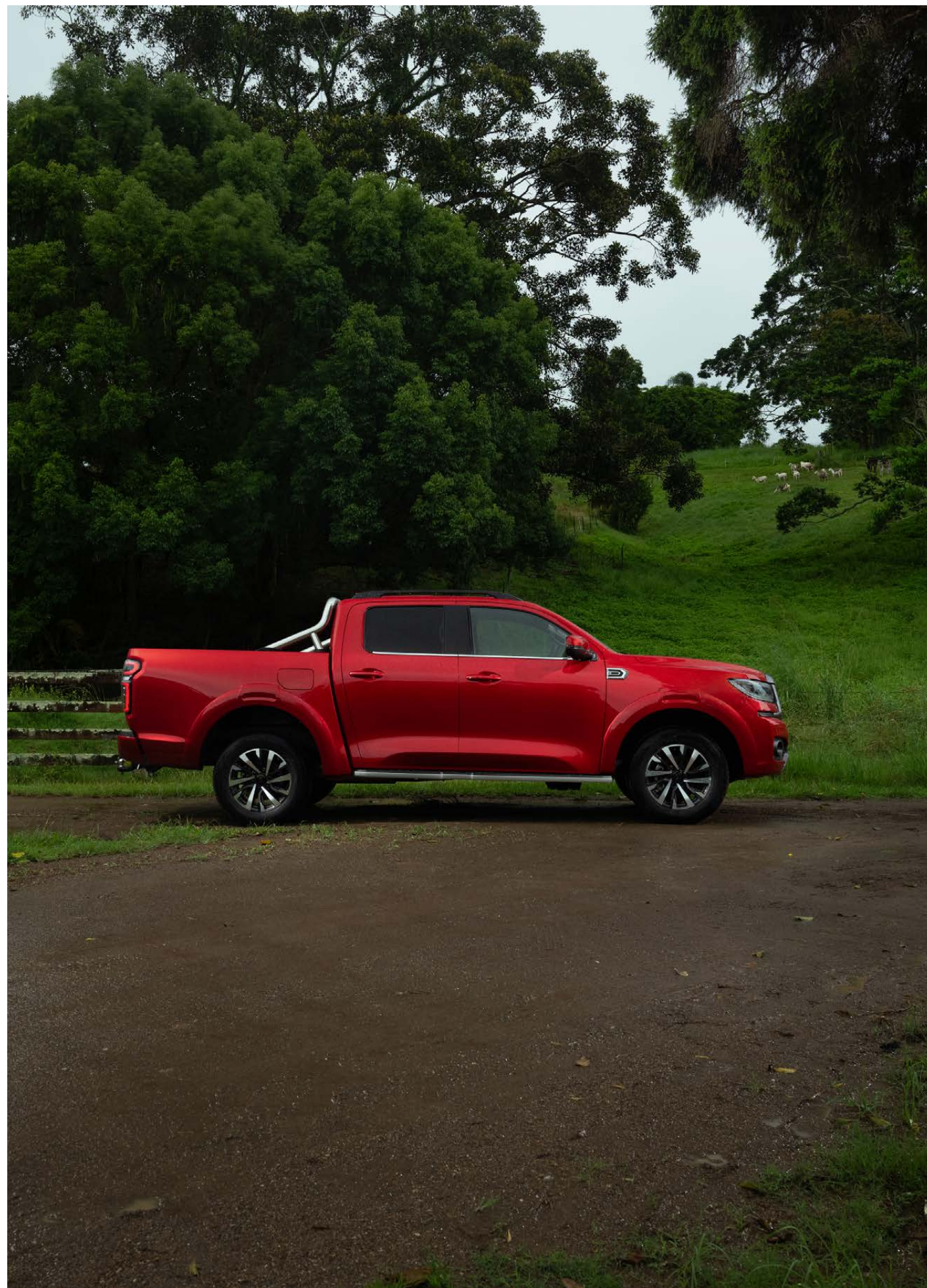


More tech? Yep, we've chucked that in.

Staying connected has never been easier with Apple CarPlay® and Android Auto™ standard across the GWM Cannon range and displayed on a crystal clear 12.3 inch colour touchscreen for infotainment on demand.

There's also the added benefit of Wireless Charging, Keyless Entry and Push button Start. The GWM Cannon truly is one of the most advanced and convenient utes available today.

Overseas model shown



Born tough. Built smart.

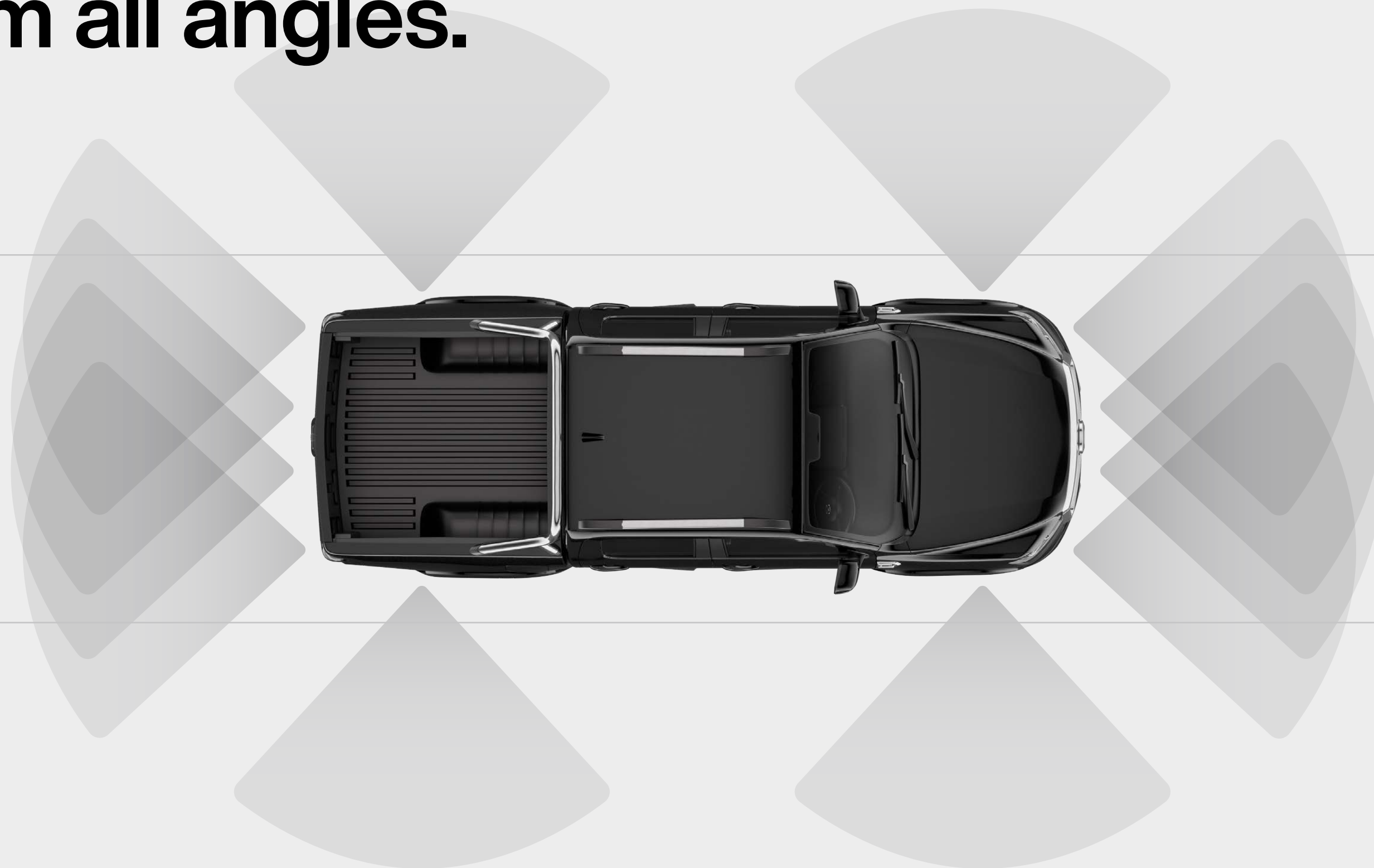


ANCAP Safety test

The GWM Cannon was born to tackle the toughest jobs but it was also built smart with a full suite of comprehensive safety systems designed to protect occupants and other road users.

Having achieved the highest possible 5 star safety rating by ANCAP in 2021, the GWM Cannon comes with a number of advanced safety features including Autonomous Emergency Braking (AEB), Lane Keep Assist and Adaptive Cruise Control. Whether at work or play, you can be sure that GWM is looking out for you.

Protection from all angles.



Smart tech, active and passive safety features and front and side monitoring mean worry-free travel.

GWM Genuine Accessories.

For the road ahead.

Visit gwmmanz.com/nz/models/ute/cannon/accessories

See your GWM Dealer to confirm Genuine Accessories are suitable for your vehicle prior to ordering, as specifications, applicability, availability and fitment requirements may change over time. Consider combined mass of load and accessories to ensure gross vehicle mass limits are not exceeded. Fitment of certain accessories may require recalibration, relocation or removal of standard equipment (which may be retained by GWM Dealer). The displayed image serves as a representation of the actual part and may vary. Contact your GWM dealer for further information.



Black Bull Bar AGP8001100A



Tow Bar Assembly AGP9001100A



Polished Nudge Bar with Bash Plate AGP8002100A



Carpet Floor Mats GJFJ00002P



Roof Rack CSJP02195X



Cannon Side Step 5150101XPW06A



Black Hard Lid AGP9007200A



Visit gwmanz.com/nz/models/ute/cannon/accessories

More aftercare... chuck it in the ute.

Every GWM comes with GWM Care. It begins from the moment you take delivery of your vehicle and continues long into the future. Wherever the road leads, you can rest assured knowing that your GWM will be kept at its best for many years to come.

7 Year
Unlimited KM
Warranty

5 Year
Roadside
Assist

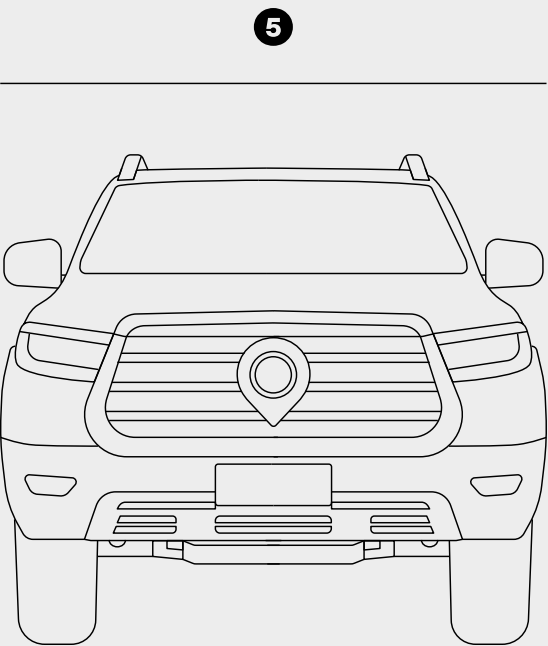
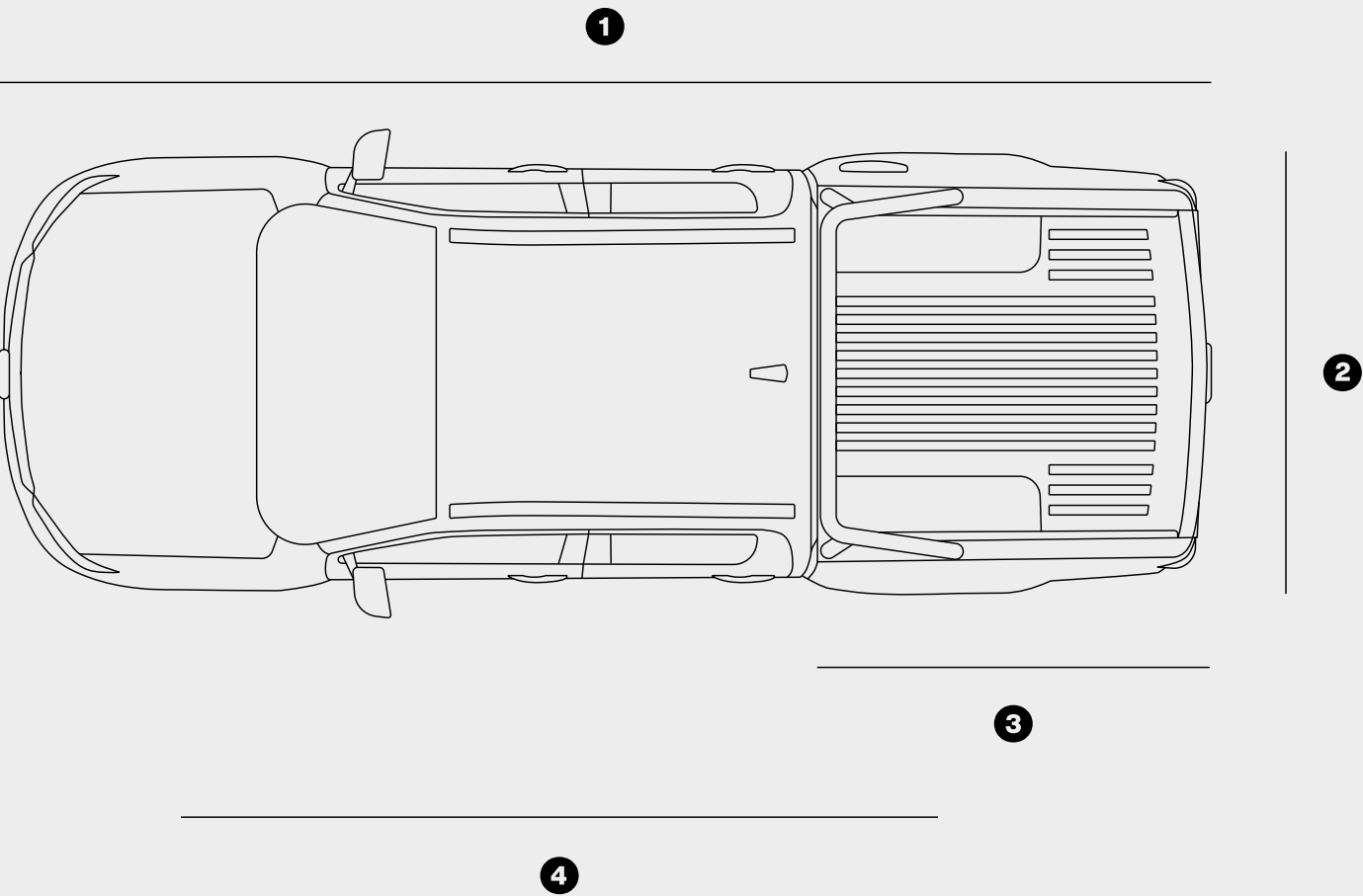


GWM vehicles are available in a range of stunning contemporary colours.



Colour.

- ① Length: 5416mm
- ② Height: 1884mm
- ③ Wheelbase: 3230mm
- ④ Tray: 1520x1520mm
- ⑤ Width: 1947mm



Dimensions.

		Cannon Lux Dual Cab
		2.4TD 4x4 Auto
DIMENSIONS	Length/Width/Height (mm)	5416*1947*1884
	Tray/tub dimension (mm)	1520*1520*540
	Wheelbase (mm)	3230
	Min. ground clearance (mm)	232
	Approach angle	27
	Departure angle	25
	Wading depth (mm)	500
	Turning circle – kerb to kerb (m)	13.1
ENGINE	Engine Variant	GW4D24
	Fuel Type	Diesel
	Displacement (cm³)	2370
	Max power (kW@rpm)	135/3600
	Max torque (Nm@rpm)	480/1500-2500
	Compression ratio	16 : 1
	Fuel economy (L/100km) combined²	8.4
	Fuel economy (L/100km) Urban²	10.1
	Fuel economy (L/100km) Extra Urban²	7.5
	Co2 emissions (g/km) combined²	221g/km
	Emission standard	Euro 5
	850W Electric radiator fan	●
	Engine cover	●
	Bonnet insulation	●
	DPF manual burn button	●
TRANSMISSION	Transmission	9AT
	Drivetrain	4x4
	Gear ratios	1st 5.288
		2nd 3.243
		3rd 2.252
4th 1.636		
5th 1.211		
WEIGHTS AND CAPACITIES	Braked towing capacity	3500
	Unbraked towing capacity	750
	Kerb weight¹ (kg)	2230
	Front axle load¹ (kg)	1295
	Rear axle load¹ (kg)	935
	Max front axle load (kg)	1500
	Max rear axle load (kg)	1950
	Max downball weight (kg)	350
	Payload¹ (kg)	995
	Gross Vehicle Mass (kg)	3225
	Gross Combined Mass (kg)	6200
	Tare weight (kg)	2173
	Seating capacity	5
	Wading depth (mm)	500
	Fuel tank capacity (L)	78L

Specifications.

		Cannon Lux Dual Cab
SUSPENSION	Front suspension	Front: coil spring double wishbone
	Rear suspension	Rear: leaf spring live axle
BRAKES	Front and rear	Front & rear: vented disc brakes
	Electronic park brake with auto hold	●
WHEELS	Wheel description	18" two tone machined alloy wheel
	Wheel spec	18x8J
	Tyre spec	265/60 R18 HT
	Spare wheel	Steel 265/60 R18
CHASSIS & STEERING	Electric power steering	●
	4 way steering wheel adjustment	●
	Steering Mode Adjustment (Sport/Comfort/Light)	●
	Rear Differential Lock (Electric)	●
	Low range transfer case	●
	Torque on demand 4x4	●
	Driving Modes	Standard, Sport, Eco, 4H, 4L
EXTERIOR	Sports bar chrome	●
	Side step - fixed	●
	Front grille - machine grey	●
	Wheel arche - body colour	●
	Under carriage protection	●
	Body coloured mirror covers	●
	Door Handle: Body colour	●
	Automatic Windscreen Wipers	●
	Roof Rails	●
	Shark fin antenna	●
	Spray on tub liner	●
	Tailgate dampener	●
	Tailgate central locking	●
	One piece tailgate	●
INTERIOR	Sunglasses holder	●
	Faux leather steering wheel	●
	Paddle shifter	●
	Multi-function steering wheel	●
	Auto window + anti pinch (Driver)	●
	12V accessories buttons	3
	Wireless Charger - Front	●
	Standard style seats	●
	Drive mode memory	●
	A pillar grab handles	●
	Front row seat belt warning	●
	Second row seat belt warning	●
	Emergency fuel cut off	●
	Emergency Driving Record	●
	Adjustable over speed alert - KM	●
	Remote central locking	●
	Crash auto unlock	●
	Trip computer	●

		Cannon Lux Dual Cab
SEATS	Faux leather seats	●
	Driver 6-way man. adjustable seat & front passenger 4-way man. adjustable seat	●
	2nd row folding seats: 60:40	●
	2nd row seats: center armrest	●
	Front Seat: Manual 2-way adjustable head rest	●
ENTERTAINMENT	7" digital instrument cluster	●
	Digital Radio (DAB+)	●
	Bluetooth®	●
	12.3" full colour touch screen infotainment system	●
	Front & rear USB A & C	●
	6 speakers	●
	Wireless Apple CarPlay® + Wireless Android Auto™	●
	Adaptive volume control	●
SECURITY	Voice command	●
	Smart entry (front)	●
	Push button start	●
	Remote engine start	●
	Speed Sensing Central Locking (15KM/H)	●
	Auto fold + Power adjust mirrors with indicator	●
	Sunvisor with illuminated vanity mirror	●
	Manual-dimming rear view mirror	●
SAFETY	Rear demister	●
	Type Pressure Monitor System (TPMS)	●
	Trailer sway mitigation	●
	7 airbags: 2x front, 2x side, 2x curtain, 1x center	●
	Driver & Front Passenger SRS Airbags	●
	Front Seatbelt Pre-tensioners With Load Limiters	●
	ISOFIX Child Restraint Anchorage Points (Outer Rear Seats)	●
	Rear door child locks	●
	Electronic Stability Control	●
	Brake Assist System (BAS)	●
	Hill Ascent/Descent Control	●
	Vehicle dynamic control system ⁶	●
	Adaptive Cruise Control (ACC)	●
	Brake Assist System (BAS)	●
	Hill Ascent/Descent Control	●
	Vehicle dynamic control system ⁶	●
	Adaptive Cruise Control (ACC)	●
	Auto Emergency Brake (AEB)	●
	AEB junction assist	●
	Front Collision Warning (FCW) pedestrian + cyclist	●
	Lane Departure Warning (LDW)	●
	Lane Keeping Assist (LKA)	●
	Lane Central Keeping (LCK)	●
	Traffic Sign Recognition (TSR)	●
	Traffic Jam Assist (TJA)	●
	ICA + Intelligent Turning	●
	Emergency Lane Keeping (ELK)	●
	Smart Dodge	●

		Cannon Lux Dual Cab
	Door Open Warning (DOW)	●
	Rear Collision Warning (RCW)	●
	Blind Spot Monitor (BSM)	●
	Lane Change Assist (LCA)	●
	Rear Cross Traffic Alert (With Brake)	●
	Electric park brake with Auto hold	●
	Emergency Signal System (ESS)	●
	Driver Fatigue Monitor System(DFMS)	●
	Reversing Camera	●
	Rear Parking Sensor x2	●
LIGHTING	Auto LED Headlights	●
	Headlight "Follow me home" function	●
	High-mounted brake light	●
	LED Taillights	●
	Auto low beam	●
	Auto high beam	●
	Front fog lamp with Steering	●
	LED Rear Fog lamp	●
	DRL (Daytime Running Light)	●
	Headlight "Follow me home" function	●
	Electric headlight levelling	●
	Reading lamp	●
	Ceiling lamp	●
AIR CONDITIONING	Sequential LED indicators	●
	Climate control aircon	●
	N95 grade dust filter	●
	Rear A/C outlet - top/under	●

¹Weights/mass/volumes/dimensions are approximate and subject to individual vehicle variances, and should be confirmed before fitting any accessories, towing or otherwise relying on this value

²Results achieved in ADR81/02 fuel consumption testing. Results produced in laboratory test conditions, using sample vehicles without fitment of accessories/customisation, and do not reflect real world driving. Figures should only be used for comparative purposes.

³Towing capacity subject to regulatory requirements, tow bar and vehicle design and towing equipment limitations.

⁴Android Auto™ is a trademark of Google LLC. Requires compatible device, USB connection, mobile data, network reception and GPS signal. Mobile usage at user's cost. Functionality subject to change.

⁵CarPlay® is a trademark of Apple Inc in the U.S. and other countries. Requires compatible device, USB connection, mobile data, network reception and GPS signal. Mobile usage at user's cost. Functionality subject to change.

⁶Vehicle dynamic control system includes Anti lock Brake System (ABS), Electronic Brake pressure Distribution (EBD), Traction Control System (TCS), Roll-over Mitigation Intervention (RMI), Electronic Stability Control (ESC)



For more information visit gwmnz.com/nz

GWM New Zealand reserve the right to alter vehicle specifications and equipment levels without notice. Some equipment featured on vehicles in this brochure may not be available or may be optional. To the extent permitted by law, GWM New Zealand shall not be liable to any person as a result of reliance on the content of the brochure. Always check with your local GWM Dealer for the latest product specifications.

Information in this brochure is current as at 30/01/2025.

Edition Code: GWMNZ 20250130.

Copyright © GWMNZ. All rights reserved.